

**RUSH
WITT &
WILSON**



**14 Sunningdale Close, Bexhill-On-Sea, East Sussex TN40 1UQ
£259,000**

A well presented two bedroom terraced house, situated in this sought after location of Penland Wood, Bexhill. Offering bright and spacious accommodation throughout, the property comprises two double bedrooms, living room, fitted kitchen, modern bathroom suite. Other internal benefits include gas central heating to radiators and double glazed windows and doors throughout. Externally, the property boasts off road parking for multiple vehicles, well maintained rear garden and garage enbloc. Viewing comes highly recommended by RWW Sole Agents.



Entrance Hallway

With entrance door, radiator, stairs leading to first floor.

Living Room

10'6" x 10'7" (3.20 x 3.23)

With double glazed window to front elevation, radiator.

Kitchen/Breakfast Room

14'0" x 8'8" (4.27 x 2.64)

Double glazed window to rear elevation, glass panelled door giving access onto rear garden, radiator, fitted kitchen with a range of wall and base level units, laminate straight edge work top surfaces, sink with drainer and mixer tap, space for freestanding cooker, space and plumbing for washing machine and tumble dryer, space for freestanding fridge / freezer.

Bedroom One

14'0" x 10'3" (4.27 x 3.12)

With double glazed window to front elevation, radiator.

Bedroom Two

11'2" x 7'3" (3.40 x 2.21)

With double glazed windows to rear elevation, radiator.

Bathroom

Modern suite comprising w.c low level flush, peddle stall mounted wash hand basin and mixer tap, panelled bath with chrome controls, window to rear elevation.

Outside**Front of Property**

Block paved driveway providing off road parking for multiple vehicles.

Rear Garden

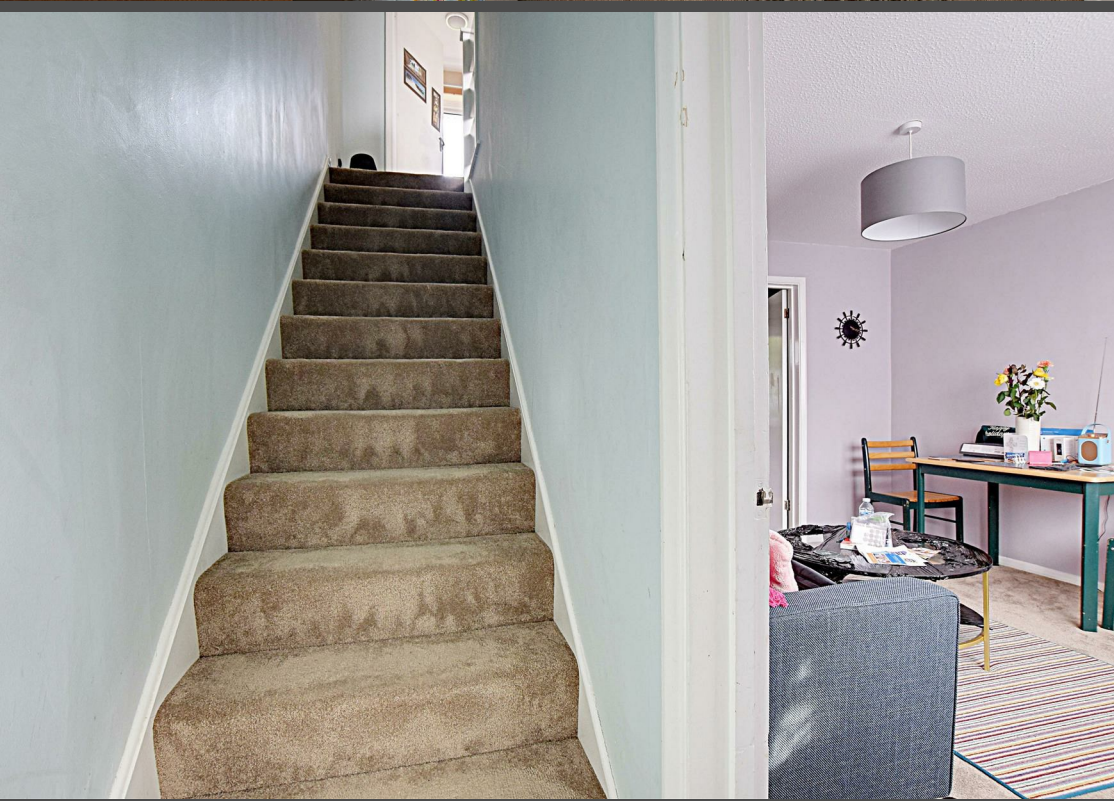
Comes laid to lawn with patio area suitable for alfresco dining, enclosed to all sides.

Garage En-bloc

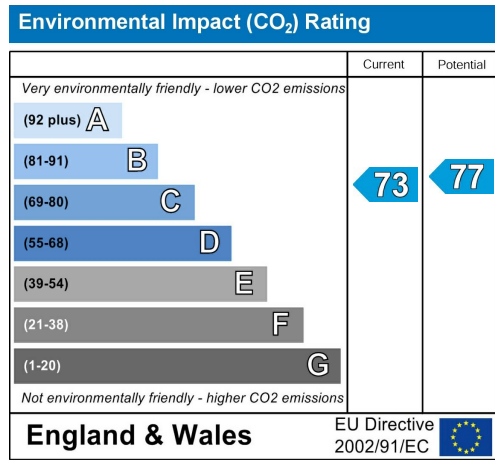
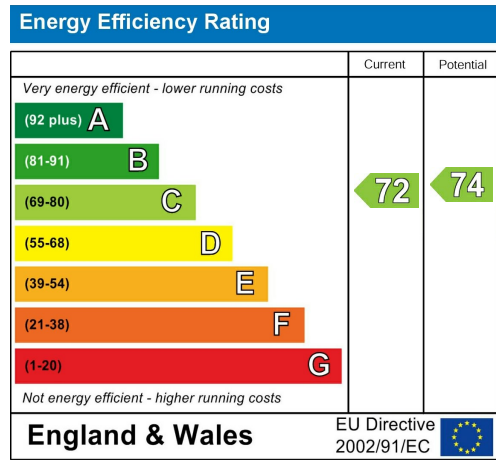
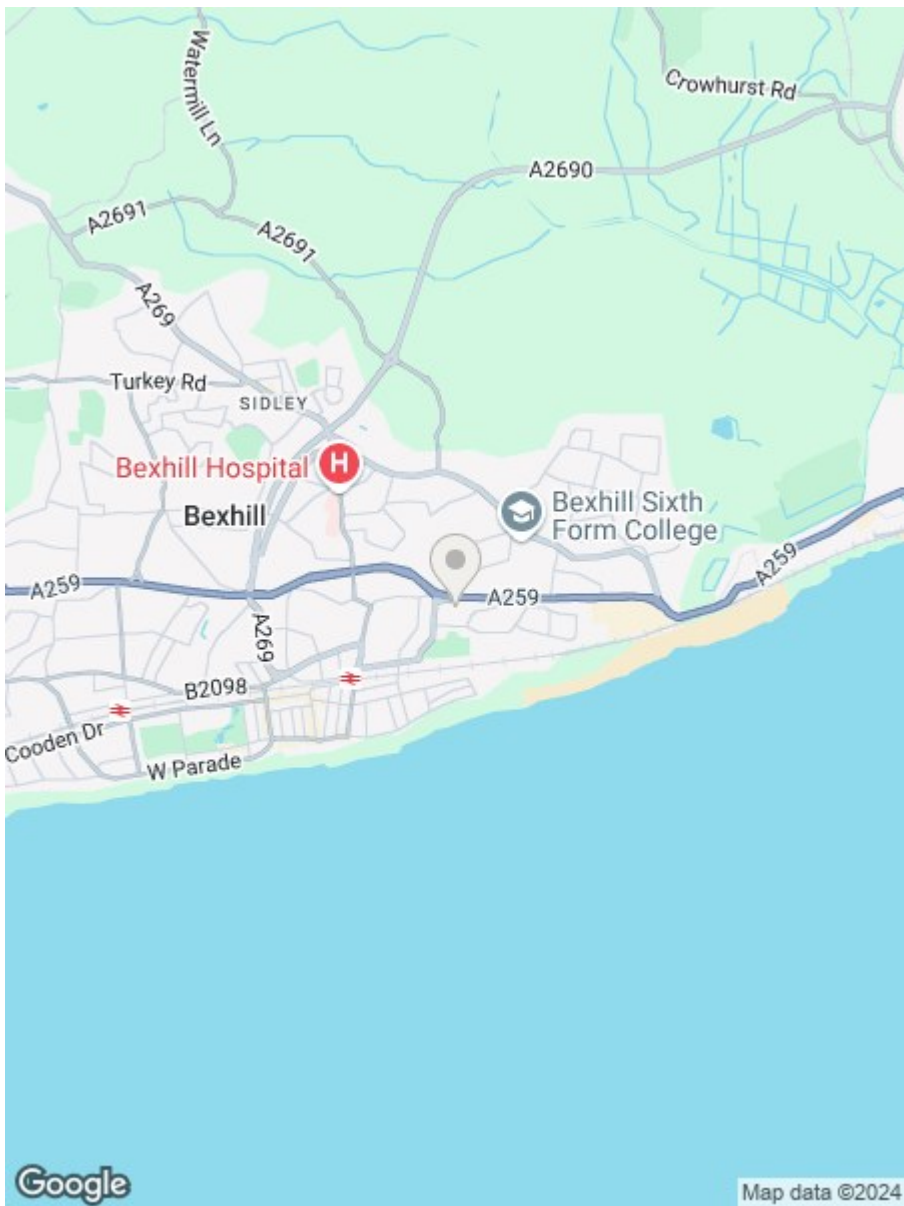
With up and over door.

Agents Notes

None of the services or appliances mentioned in these sale particulars have been tested. It should also be noted that measurements quoted are given for guidance only and are approximate and should not be relied upon for any other purpose.







**RUSH
WITT &
WILSON**

Residential Estate Agents
Lettings & Property Management



3 Devonshire Road
Bexhill-on-Sea
East Sussex
TN40 1AH
Tel: 01424 225588
bexhill@rushwittwilson.co.uk
www.rushwittwilson.co.uk